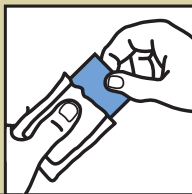


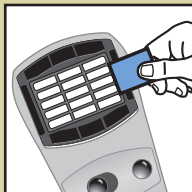
DIRECTIONS FOR USE

It is a violation of Federal law to use this product in a manner inconsistent with its labeling.

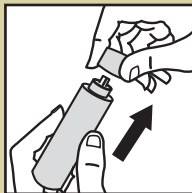
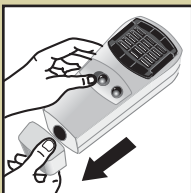
- 1** Remove one ThermaCELL® mat from wrapper. One mat lasts a maximum of 4 hours. Mat turns from pale blue to white when active ingredient has been exhausted.



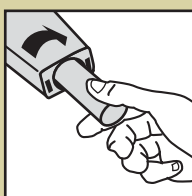
- 2** Make sure the 'ON/OFF' switch on the appliance is in the 'OFF' position. Insert the mat under the appliance's black grill. To change mats, slide the 'ON/OFF' switch to 'OFF' and allow the appliance to cool completely. Push the used mat out by inserting a fresh one.



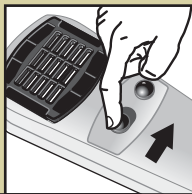
- 3** Remove the appliance cover and butane cartridge cap.



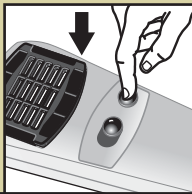
- 4** Screw the cartridge into the opening of the appliance. Make sure the cartridge is fully inserted by turning it clockwise until it stops. Replace the appliance cover. One ThermaCELL® butane cartridge lasts a maximum of 12 hours. If your appliance fails to heat, it may be out of fuel. Check the fuel level by holding the appliance vertically and looking at the fuel gauge on the bottom. You can see the amount of butane in the cartridge. Replace if empty.



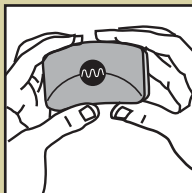
- 5** Slide the 'ON/OFF' switch to the 'ON' position; the butane gas will begin to flow.



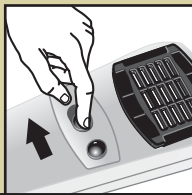
- 6** Wait approximately 5 to 10 seconds then depress the 'START' button three to five times in rapid succession.



- 7** To verify the appliance is operating, pick it up and check the lens on the end of the appliance. The light at the end of the appliance glows when the appliance is heating. If the light is not glowing, check to make sure the appliance is 'ON' and cartridge is completely screwed into place; then once again depress the 'START' button three to five times in rapid succession. Check to make sure the light is glowing.



- 8** Place the appliance on a flat, stable area, with the grill side facing up. Do not touch the grill; it will be hot after a couple of minutes. Some visible vapor will appear during use; this is normal. When finished using the appliance, slide the 'ON/OFF' switch to the 'OFF' position, and allow the appliance to cool completely. Appliance is now ready for storage.



Allow 10 to 30 minutes, depending upon the size of the area, for product to take effect. This product works well in outdoor areas where there is minimal air movement, such as decks, unenclosed porches, patios and yards. Use one appliance per each 225 square feet (an area 15' x 15') or 15 feet in diameter. **Use Restrictions:** Only for outdoor use as an insect repellent. Do not use indoors, in tents or in any enclosed area. Do not insert anything other than ThermaCELL® mats into the appliance. Cover or remove all exposed food. Do not leave appliance unattended or use in windy conditions. Do not expose appliance or mats to rain. Do not attach appliance to your body or clothing. Place appliance on a flat, stable surface with the grill facing upward. Clean with a damp cloth only when the appliance is cool and inactive. Butane cartridges other than ThermaCELL® cartridges will not work in this appliance.

STORAGE AND DISPOSAL

Do not contaminate water, food or feed by storage or disposal.

Storage: Store unused mats in original box in a cool, dry place inaccessible to children and pets. Store appliance and butane cartridges in original box in a cool, dry place away from sources of heat. **Disposal:** Non-refillable container; do not refill or reuse this container. **If cartridge is empty or for used mats:** Do not reuse empty packaging, wrappers or cartridges. Do not puncture or incinerate empty cartridges. Place in trash or offer for recycling if available. **If cartridge is partly filled or for unused mats:** Call your local solid waste agency for disposal instructions. Never place unused mats down any indoor or outdoor drain. **For unwanted appliance:** Place in trash or offer for recycling if available.

Batch Code:

PRECAUTIONARY STATEMENTS

Hazards to Humans and Domestic Animals

CAUTION: Harmful if inhaled. Do not breathe vapors. Remove and wash contaminated clothing before reuse.

First Aid

If Inhaled: Move person to fresh air. If person is not breathing, call 911 or an ambulance, then give artificial respiration, preferably by mouth-to-mouth, if possible. Call a poison control center or doctor for further treatment advice. Have the product container or label with you when calling a poison control center or doctor, or going for treatment.

Physical and Chemical Hazards

Extremely flammable. Contents under pressure. Keep away from fire, sparks and heated surfaces. Do not puncture or incinerate butane container. Exposure to temperatures above 130°F may cause bursting.

Environmental Hazards

This product is toxic to fish, shrimp and aquatic invertebrates. Do not apply directly to water. Do not contaminate water when cleaning equipment or disposing of equipment washwater or rinsate. Drift may be hazardous to aquatic organisms in water adjacent to treated areas.

Warranty and Disclaimers

Seller will not be held responsible for damage, injury or poor performance caused by use of other butane cartridges or repellent mats. Seller is not responsible for damage caused by using this butane cartridge in other butane products.