

ThermaCELL®

Mini Mosquito Repellent Lantern



DIRECTIONS FOR USE

It is a violation of Federal law to use this product in a manner inconsistent with its labeling.

1 Remove one ThermaCELL® Mosquito Repellent mat from wrapper.



2 Insert the mat under the grill at the top of the lantern.



3 Remove the butane cartridge cap and screw cartridge into the opening in the lantern base by turning the cartridge clockwise until it stops. The gas will begin to flow. Make sure the cartridge is fully inserted.



4 Place the lantern on a flat, stable area. Flip open the top of the lantern and hold a lit match or lighter near the white tube in the center of the globe. Verify the lantern is operating (lantern will glow), then close the top of the lantern. If the lantern fails to glow check to make sure the cartridge is fully inserted. Also check the cartridge's fuel level. If the fuel level in the cartridge is empty, replace the cartridge and repeat steps 3 and 4.



5 Do not touch the top of the lantern; it will be hot after a couple of minutes. If you have to re-light the lantern, make sure it has completely cooled before opening the top.

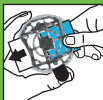
6 To move the lantern while it is operating, pick it up by the base while holding the button on the side of the base with your thumb. This will temporarily prevent the automatic shut-off switch from extinguishing the flame when you pick up the lantern.



7 When finished using the lantern, unscrew the cartridge at least one full turn and verify that the lantern is no longer glowing. Allow the lantern to completely cool before storing.



8 To replace a used mat, turn off lantern by unscrewing the cartridge and allow lantern to cool completely. Push the used mat out by inserting a fresh mat.



For best results allow 10 to 30 minutes, depending upon area, for product to take effect. This product works well in outdoor areas where there is minimal air movement, such as decks, porches, patios and yards. It is great for camping. Use one lantern per 225 square feet (an area 15' x 15') or 15 feet in diameter. Use more lanterns in larger areas. Do not expose lanterns or mats to rain. Do not contaminate food. Do not leave lantern unattended or use in windy conditions. Automatic shut-off switch if lantern tips or is lifted. No messy wax to drip or spill. Lantern provides diffused light as it repels mosquitoes, black flies, flying insects, bugs and biting flies. Provides up to 4 hours protection per mat. Simply screw in the cartridge, light the lantern with any match or lighter and enjoy the outdoors in mosquito- and bug-free comfort for hours. Match or lighter required to operate. Each mat lasts up to 4 hours and each ThermaCELL® butane cartridge lasts up to 12 hours. Mat turns from pale blue to white when repellent has been exhausted. Some visible vapor will appear during use. This is normal and no cause for concern.

Storage and Disposal

Storage: Store unused mats in original packaging in a cool, dry place inaccessible to children and pets. Store lantern and butane cartridges in a cool, dry place away from sources of heat.
Disposal: Do not reuse empty wrappers or cartridges. Do not puncture or incinerate empty cartridges. Place in trash or offer for recycling if available. **If cartridge is partly filled or for unused mats:** Call your local solid waste agency for disposal instructions. Never place unused mats down any indoor or outdoor drain.

PRECAUTIONARY STATEMENTS

Hazards to Humans & Domestic Animals

CAUTION: Only for outdoor use as an insect repellent. Do not use indoors, in tents or any enclosed area. Harmful if inhaled. Avoid breathing vapors. Do not touch the grill while the lantern is in use. The grill is hot while in use. Do not insert anything other than ThermaCELL mats into the lantern.

Physical and Chemical Hazards

Place lantern on a flat, stable surface with the grill facing upward. Do not cover with any material while in use. Clean with a damp cloth only when the lantern is cool and inactive. Cartridge contains flammable, pressurized butane. Do not use near fire or flame. Protect the butane cartridges from sunlight. Do not expose them to temperatures above 120F (50C). Do not pierce, break or incinerate butane cartridges, even after use. Butane cartridges other than ThermaCELL® cartridges will not work in this lantern. Seller will not be held responsible for damage, injury or poor performance caused by use of other butane cartridges or repellent mats.

Environmental Hazards

This pesticide is highly toxic to fish. Do not apply directly to water. Drift from treated areas may be hazardous to organisms in adjacent aquatic sites.

First Aid

If Inhaled: Move person to fresh air. If person is not breathing, call 911 or an ambulance, then give artificial respiration, preferably by mouth-to-mouth, if possible. Call a poison control center or doctor for further treatment advice. Have the product container or label with you when calling a poison control center or doctor, or going for treatment.